

marri *Findings*

FAITH & FAMILY

Sex Differences in Correlates between Attachment, Brain Size, Wiring and Jealousies

“...It is not an act of justice but of foolish injustice to pretend the sexes are the same. Justice is exercised in respectfully providing for the due needs of each.” - J. Budziszewski, Professor of Government and Philosophy at the University of Texas, Austin

Same Attachment Style: Very Different Brain Structure Effects for Men and Women



A [2018 study](#) exploring the structural basis underlying the interaction between sex and attachment style among 106 healthy young adults found that avoidant attachment was negatively correlated with regional gray matter volume of the right [occipital gyrus](#) in women, whereas the inverse correlation was found in men.

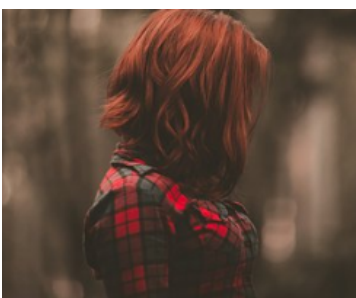
Wired Differently: Attachment Styles and Sexual Attitudes



A [2013 study](#) of 4,246 men and women found that men with a dismissive-avoidant attachment style were more likely to approve of casual sex and were more sexually permissive. This was not the case, however, for women with a dismissive-avoidant attachment style.

However, it found that women with a secure attachment style were less likely to approve of casual sex and less sexually permissive. This was not seen among men with a secure attachment style.

Sex Differences in Attachment Styles, Jealousies and Infidelities



A [10-year-old study](#) looking at sex differences in jealousy by attachment style among 416 undergraduate students enrolled in introductory psychology classes in New York City colleges found that men with dismissive attachment styles were almost four times more likely than women with dismissive attachment styles to report greater jealousy regarding

sexual infidelity than emotional infidelity. The study also found that men and women with secure attachment styles were more likely to report greater jealousy regarding emotional infidelity than sexual infidelity.

The Wandering Male vs. Ordered Liberty



Male-female differences in attachment styles point in the same direction that [Millet](#) and [Firestone](#), the Marxist feminists, pointed: men are inclined to wander, sexually. J. R. R. Tolkien, definitely not a Marxist feminist, more or less said the same in his [letter to his son](#) on marriage: “Men are not [monogamous]. No good pretending. Men just ain’t, not by their animal nature.” [Continue Reading...](#)



For More Information about [Healthy Marriages](#), please visit Marripedia.org



[View E-mail in Browser](#)