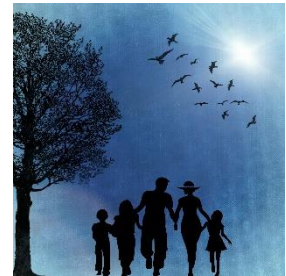

GOD LIKES ROMANCE

[Frank Fincham](#), from Florida State University's Family Institute, conducted research on the effect of prayer on college romances. He found that prayer caused a decline in premarital sex and an increase in a sense of belonging. This was found to be the case not just with typical "self-report" measures but in blind ratings by outsiders. [Read about](#) this wonderfully designed piece of [research](#) by an eminent Rhodes Scholar.

NOTABLE RESEARCH: BRAD WILCOX, ET AL.

Strong families, Prosperous States

The family has a profound impact on the economics of a state. A new report by respected researchers Wilcox, Price, and Lerman shows four key links between family and economic welfare at the state level. Read the entire report [here](#).



MAPPING AMERICA: RELIGION AND SEXUAL FULFILLMENT



Over time, we have produced several Mapping Americas on sexual fulfillment. Today we present a consolidation from the perspective of the frequency of religious worship. [See the selection here](#).

MARRIPEDIA

The Future of MARRI: Coming Next Week!

