

marri Findings

FAITH & FAMILY

MILITARY SUICIDE AND RELIGIOUS PRACTICE

U.S. Military: Amongst Religious Hostility Suicide Rates Soar

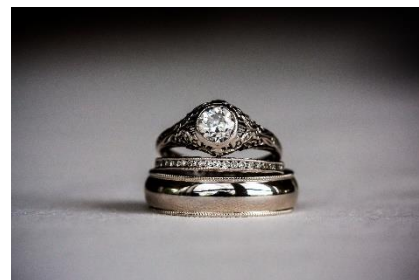


“Over the last decade, the Armed Forces have become [increasingly hostile to religious liberty](#) and also have a record suicide rate. Restoring religious liberty and encouraging religious practice would significantly improve the [mental well-being](#) of our nation’s soldiers, as religious practice delivers fundamental benefits to mental well-being.” [Read the entire post here.](#)

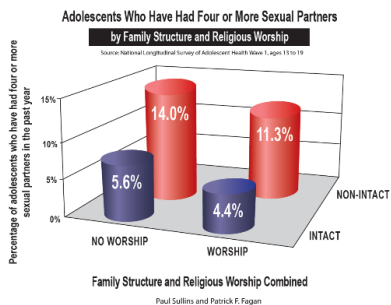
NOTABLE RESEARCH - - FAMILY STUDIES

Safety and Successful Marriages

Scott Stanley and Howard Markman argue that one of the best ways to determine a healthy marriage is “by considering four types of safety: physical safety, emotional safety, commitment safety, and community safety. These categories encompass the vast array of research and theory about success in relationships, marriage, and family—even where the literatures rarely use the term ‘safety.’” [Read their entire commentary here.](#)



MAPPING AMERICA: COMBINED FAMILY AND RELIGION



Adolescents Who Have Had Four or More Sexual Partners

Data from *National Longitudinal Survey of Adolescent Health* shows that adolescents raised [in intact families that attend religious services weekly or more frequently](#) are least likely to have four or more sexual partners in the past year.