

Dear Friends,

Individuals' life decisions determine the social and relational fabric of our nation. Encouraging positive practices and discouraging harmful behaviors in our families, schools, and local community will produce macro benefits for the entire nation. Here are some positives, negatives and neutrals!

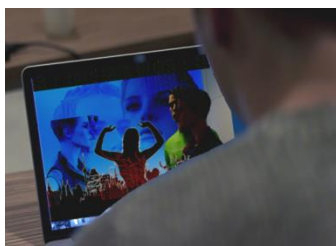
FEATURED ON MARRIPEDIA



Effects of Marriage on Society

Marriage is the foundational relationship of strong society. Within a family formed from an intact marriage, the child better learns to value and perform the fundamental tasks every competent adult must master--- the tasks of the fundamental institutions needed in every functional society. Read this [entry on Marrimedia](#).

RESEARCH HIGHLIGHTS



Porn: A Public Health Crisis

The Barna Research Group recently released their landmark study, [The Porn Phenomenon](#), to assess Americans' views on and use of pornography. Gail Dines of Wheelock College [has labeled pornography](#) "a public health crisis." [This Marrimedia entry](#) tells more about the effects of pornography on adolescents.



How Highly Religious Americans Differ from Others

Michael Lipka of the Pew Research Center [compares](#) highly religious Americans to their less religious counterparts on some key measures. These [Marrimedia entries](#) illustrate, yet more, how frequent religious practice affects everyday life.



Life Expectancy and Income

The average life expectancy of poorer Americans varies with their geographic location, according to Neil Irwin and Quoc Trung Bui's [analysis](#) based on data from [The Journal of the American Medical Association](#) and the [Health Inequality Project](#). Other factors that affect the striking differences in morbidity and longevity are reported in [this Marrimedia entry](#).

Sincerely,

Patrick Fagan

Director of the Marriage and Religion Research Institute (MARRI)