

Dear Friends,

This week we share with you research on the effects of parental union disruptions on children's future relationships, on the rise in cohabiting unions, and on the decline of child support payments.

## [NEW MARRIPEDIA ENTRY](#)

### **Effects of Single Parenthood on Poverty**

Despite spending over \$22 trillion on government anti-poverty programs since the 1960s War on Poverty began, the child poverty rate has barely decreased: from 20.7 percent in 1965 to 19.2 percent in 2015. The War on Poverty largely failed because it ignored the role of marriage in reducing poverty. [Continue Reading...](#)

## [NEW RESEARCH HIGHLIGHTS](#)



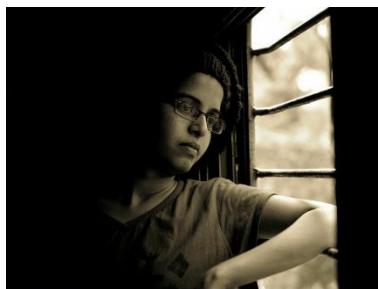
### **Parental Union Disruption Affects Children's Union Stability**

Parental union disruption (both divorce and cohabitation) increases the likelihood of offspring union disruption and offspring's number of sexual partners, [according](#) to researchers at Pennsylvania State University.



### **Increasing Rise in Cohabitation**

Nearly two thirds of women aged 19-44 have ever cohabited, [reports](#) researchers at Bowling Green State University. The number of cohabiting women (of all women aged 19-44 in a current union) has increased by 180 percent over the past 25 years.



### **Child Support Declines**

Non-intact families utilizing the child support enforcement system has *been declining since 2004*, despite a relatively constant population of child support-eligible families. As a result, fewer families enjoy self-sufficiency and instead rely on the government, [according](#) to researchers at the American Enterprise Institute.

## [MARRIPEDIA ENTRIES RELATED TO THESE FINDINGS](#)

- 1) ["Effects of Divorce on Children's Future Relationships"](#)
- 2) ["Cohabitation and Future Marital Stability"](#)
- 3) ["Effects of Family Structure on the Economy"](#)

With an eye to the child, the future of America,

Pat Fagan

Director of the MARRI Project